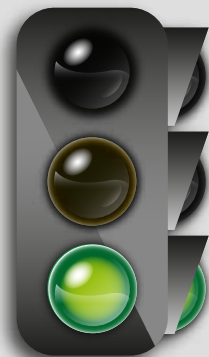


POPOCATEPETL



Volcanic Traffic Light Alert

NORMALITY



Inform yourself. Know evacuation routes, meeting places and temporary shelters.

Phase 1 Calm volcano



Phase 2 Minimum manifestations

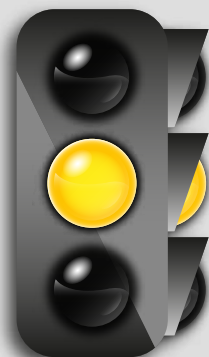


- Fumaroles and sporadic seismic activity.

The Popocatepetl is one of the most studied and monitored volcanoes worldwide.

Within a radius of less than 100 km from the crater, 25 million people live.

ALERT



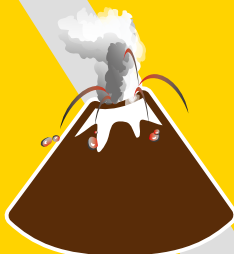
Remain aware and get ready for a possible evacuation.

Phase 1 Manifestation of activity



- Frequent local volcanic seismicity.
- Sporadic and light ash emissions.

Phase 2 Increased activity



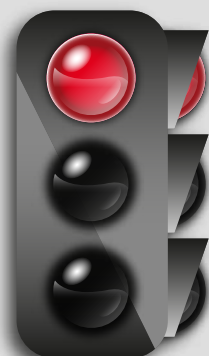
- Plume of steam and gas.
- Light ashfall in nearby areas.
- Fall of incandescent fragments.
- Possibility of pyroclastic flows from explosions.
- Mudflows and debris within short range.

Phase 3 Intermediate to high activity



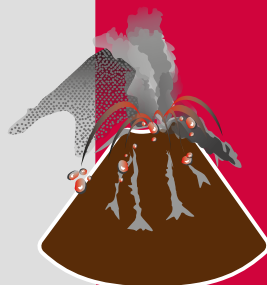
- Growth and destruction of lava domes.
- Persistence of fumaroles, gas and light ashfall in nearby areas.
- Explosions of increasing intensity with launch incandescent fragments.
- Possible pyroclastic flows midrange.

ALARM



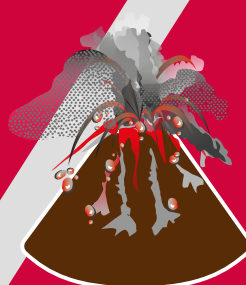
Imminent danger. You and your family have to be ready for evacuation.

Phase 1 Explosive activity of intermediate to high risk



- Eruption column of several kilometers of steam and gas.
- Launch of incandescent fragments on the slopes of the volcano.
- Important ashfall in distant towns and cities.
- Pyroclastic flows and mudflows that can reach nearby towns.

Phase 2 Explosive activity of high to extreme risk



- Eruption columns of long range.
- Heavy ashfall, sand and volcanic fragments at greater distances.
- Possible partial collapse of the volcano.
- Pyroclastic flows and debris flows reaching near and intermediate populations.
- Great devastating lahars.
- Serious damage to the environment and areas marked on the volcanic hazards map.

Learn more: www.gob.mx/proteccion-civil / www.gob.mx/cenapred

Source: Centro Nacional de Prevención de Desastres